

THE DRIVE

EDGWARE, HA8 8PS

£2,100 PER MONTH

A modern and recently refurbished two-bedroom first floor flat located at 1A The Drive, Edgware, HA8.

The property offers bright and well-presented accommodation, including two good-sized bedrooms, a family bathroom, an ensuite shower room, a fitted kitchen, and a comfortable, spacious living area. Further benefits include access to a shared driveway and garden.

Ideally situated in a popular residential location, the flat is within easy reach of local shops, schools, Edgware town centre and a short walk to Edgware Tube and bus stations.

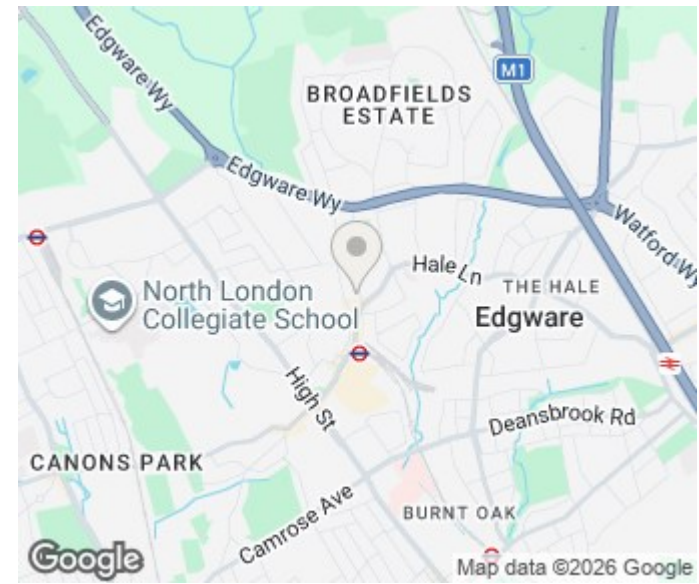
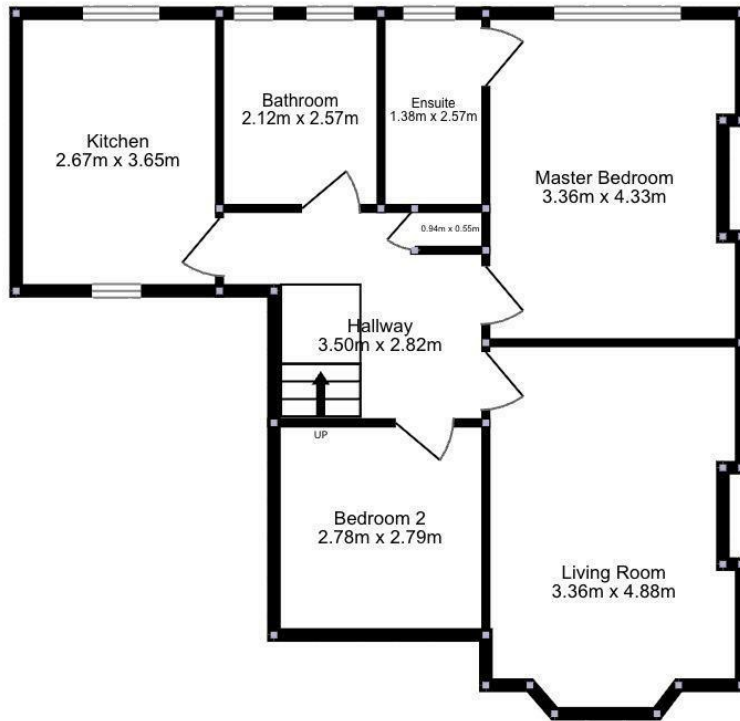
Perfect for professional tenants, a couple, or a small family. Early viewing is highly recommended.



TAYLOR HAWKINS
Estate Agents
0208 958 2222 / Taylor-hawkins.co.uk

Total Floor Area
64.70m²

Ground Floor



Energy Efficiency Rating		
	Current	Potential
Very energy efficient - lower running costs		
(92 plus) A		
(81-91) B		
(69-80) C		79
(55-68) D		
(39-54) E	50	
(21-38) F		
(1-20) G		
Not energy efficient - higher running costs		
England & Wales	EU Directive 2002/91/EC	

Agents Note: Whilst every care has been taken to prepare these particulars, they are for guidance purposes only. All measurements are approximate and are for general guidance purposes only and whilst every care has been taken to ensure their accuracy, they should not be relied upon and potential buyers/tenants are advised to recheck the measurements

Edgware Sales
58 Edgware Way
Edgware
Middlesex
HA8 8DJ

020 8958 2222
property@taylorhawkins.co.uk
<https://taylorhawkins.co.uk/>



TAYLOR HAWKINS
Estate Agents
0208 958 2222 / [Taylorhawkins.co.uk](https://taylorhawkins.co.uk)